

N.E. 1/4

44-1

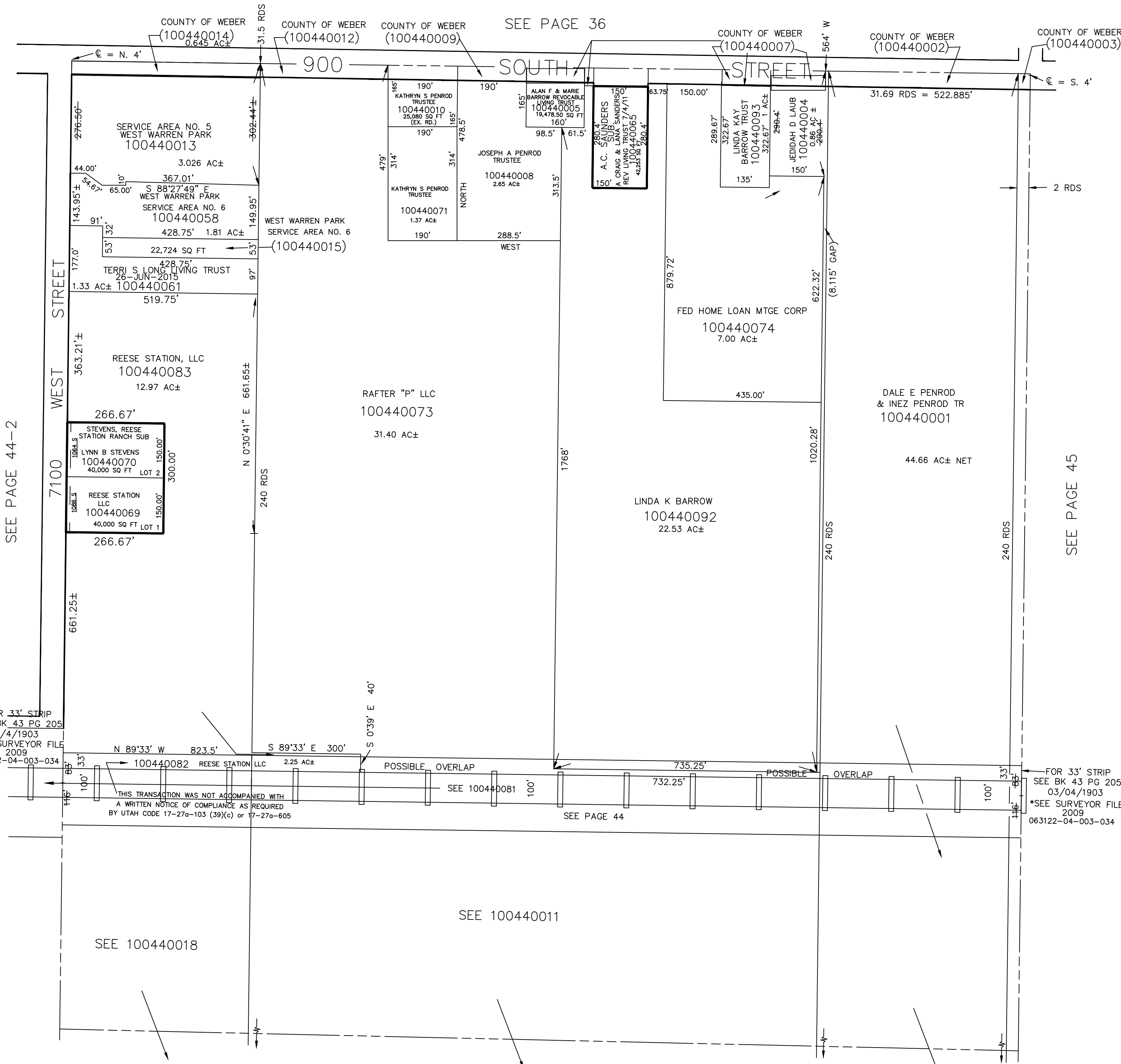
TAXING UNITS: 303

SECTION 23, T.6N., R.3W., S.L.B.& M.

IN WEBER COUNTY

SCALE 1" = 200'

SEE PAGE 36



SEE PAGE 44-2

SEE PAGE 45

FOR 33' STRIP
SEE BK 43 PG 205
3/4/1903
*SEE SURVEYOR FILE
2009
063122-04-003-034

FOR 33' STRIP
SEE BK 43 PG 205
03/04/1903
*SEE SURVEYOR FILE
2009
063122-04-003-034

THIS TRANSACTION WAS NOT ACCOMPANIED WITH
A WRITTEN NOTICE OF COMPLIANCE AS REQUIRED
BY UTAH CODE 17-27a-103 (39)(c) or 17-27a-605

SEE PAGE 44

SEE 100440011

SEE 100440018

SEE PAGE 44